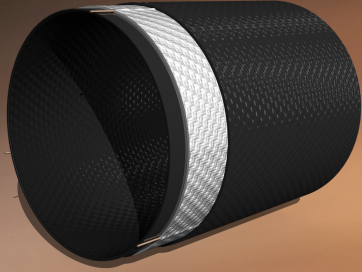


FLEXIGOM[®] PU ANTIESTATIC



CONSTRUCTION

Interior and exterior layer:

Extruded thermoplastic polyurethane. Minimal flow loss thanks to its smooth interior wall. Black. Shiny surface without grooves.

Reinforced middle textile:

Circular weaved outer layer made from high tenacity polyester thread. No defects (broken threads, knots, etc.).

Contains 3 copper threads to make it antistatic.

PERFORMANCE

- Flexible and highly-resistant hose.
- Flexible despite its antistatic properties.

USES

- Cleaning of tanks with flammable products.
- Transfer of liquids with risk of explosion.
- Unloading flammable chemicals.

TECHNICAL CHARACTERISTICS

DIAMETER		COLOR	BREAKAGE PRESSURE	WORKING PRESSURE	WEIGHT	THICKNESS		TRACTION	
inches	mm.		bars	bars	kg/m	inches	mm.	Lbs	Kg
2"	51	BLACK	70	21	0,52	0,10	2,60	13448	6100
3"	76	BLACK	48	16	0,78	0,11	2,80	19180	8700
4"	102	BLACK	52	17,5	1,04	0,11	2,79	27000	12150
5"	127	BLACK	42	14	1,41	0,12	3,05	35000	15750
6"	153	BLACK	42	14	1,71	0,12	3,05	38000	17100
8"	203	BLACK	42	14	2,97	0,15	3,81	80000	36000
10"	254	BLACK	42	14	4,30	0,16	4,06	110000	49500